



INSIGHTS COLLECTIVE
Pandemic Economics Think Tank

COVID-19 Virus Tracking Reports

Data as of 2/7

*Made possible by contributions from other civic minded organizations
including Red Sky Travel Insurance.*

Compiled by Susan Rubin-Stewart & Jane Babilon



COVID-19 Virus Tracking

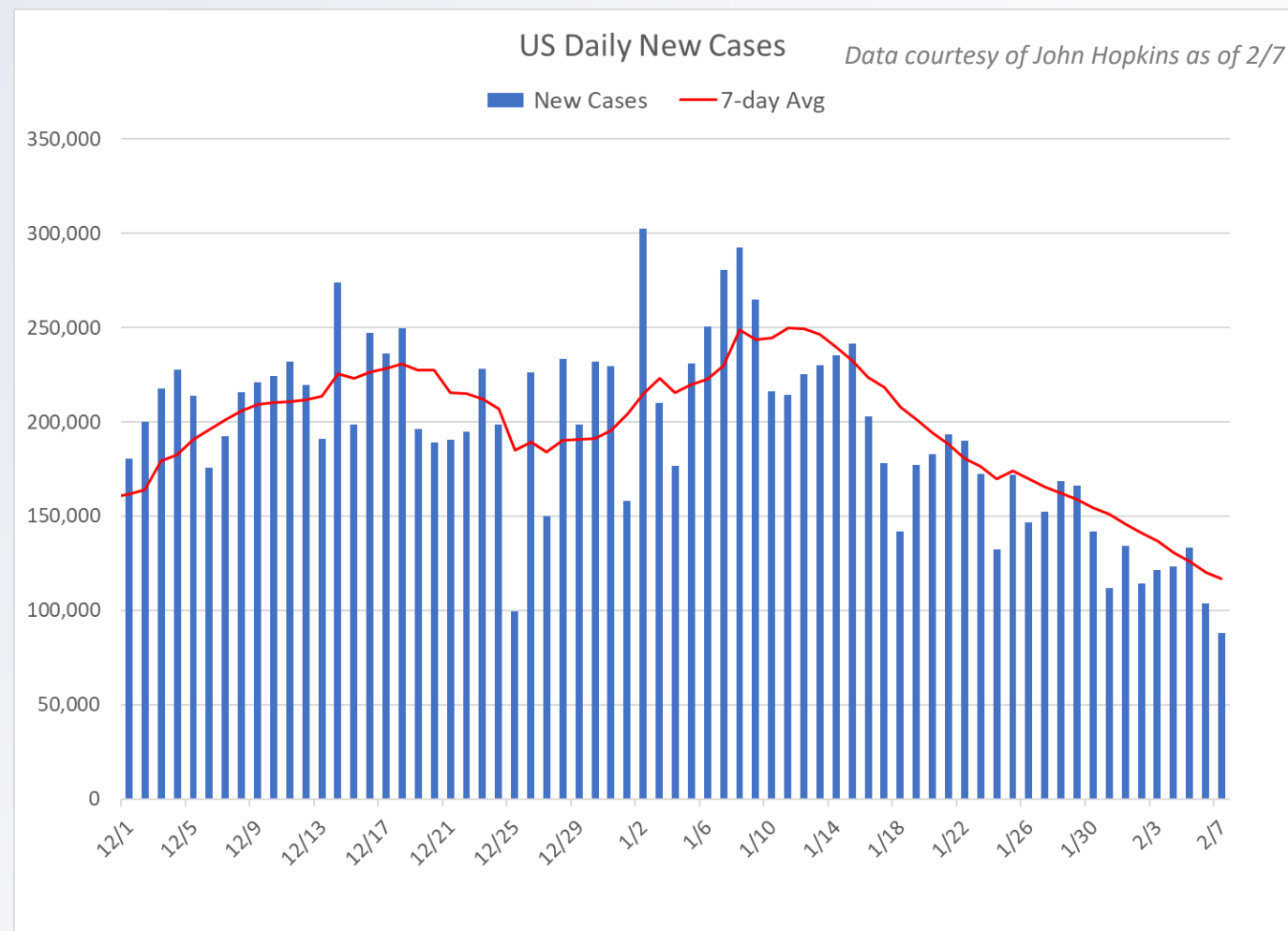
Graphs contained in this report provide a summary of nationwide COVID cases and testing as well as regional breakouts of feeder markets, Western mountain destinations and Southeast destinations.

Also included are graphs showing a comparison of the destinations/feeder markets that we track within some individual state.



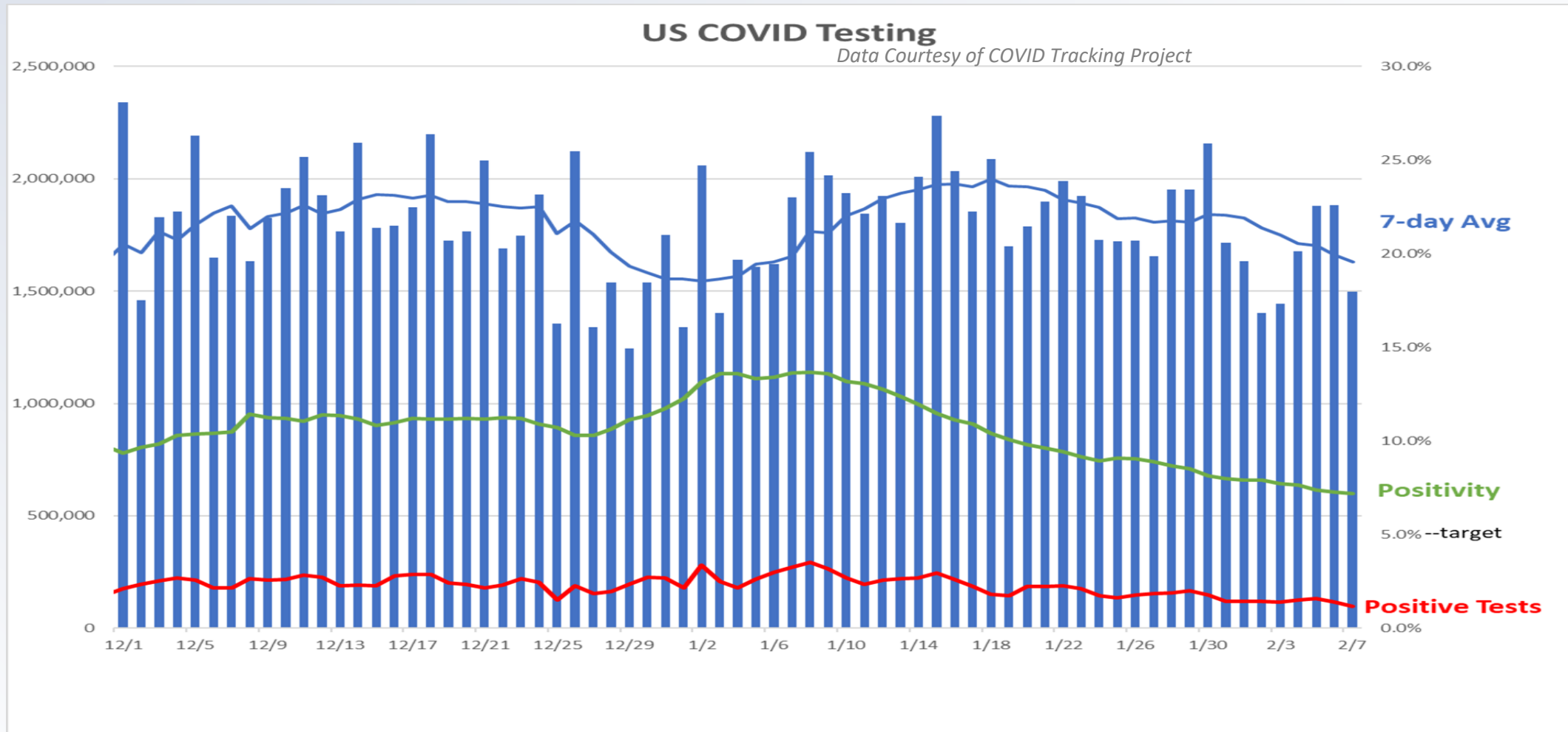
U.S. New Cases

- Daily new cases fall below 100,000 for the first time this year.





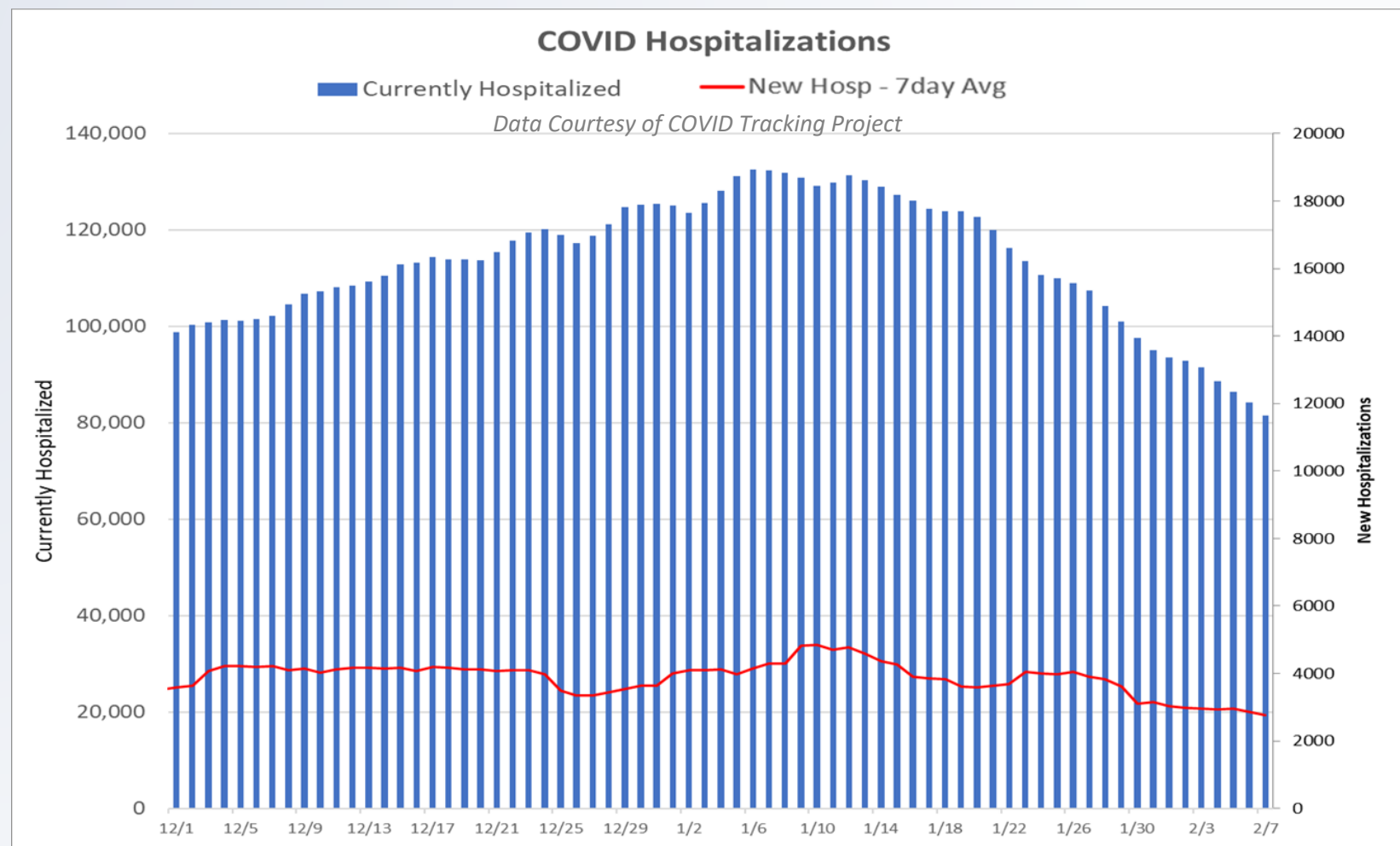
U.S. Testing





US Hospitalizations

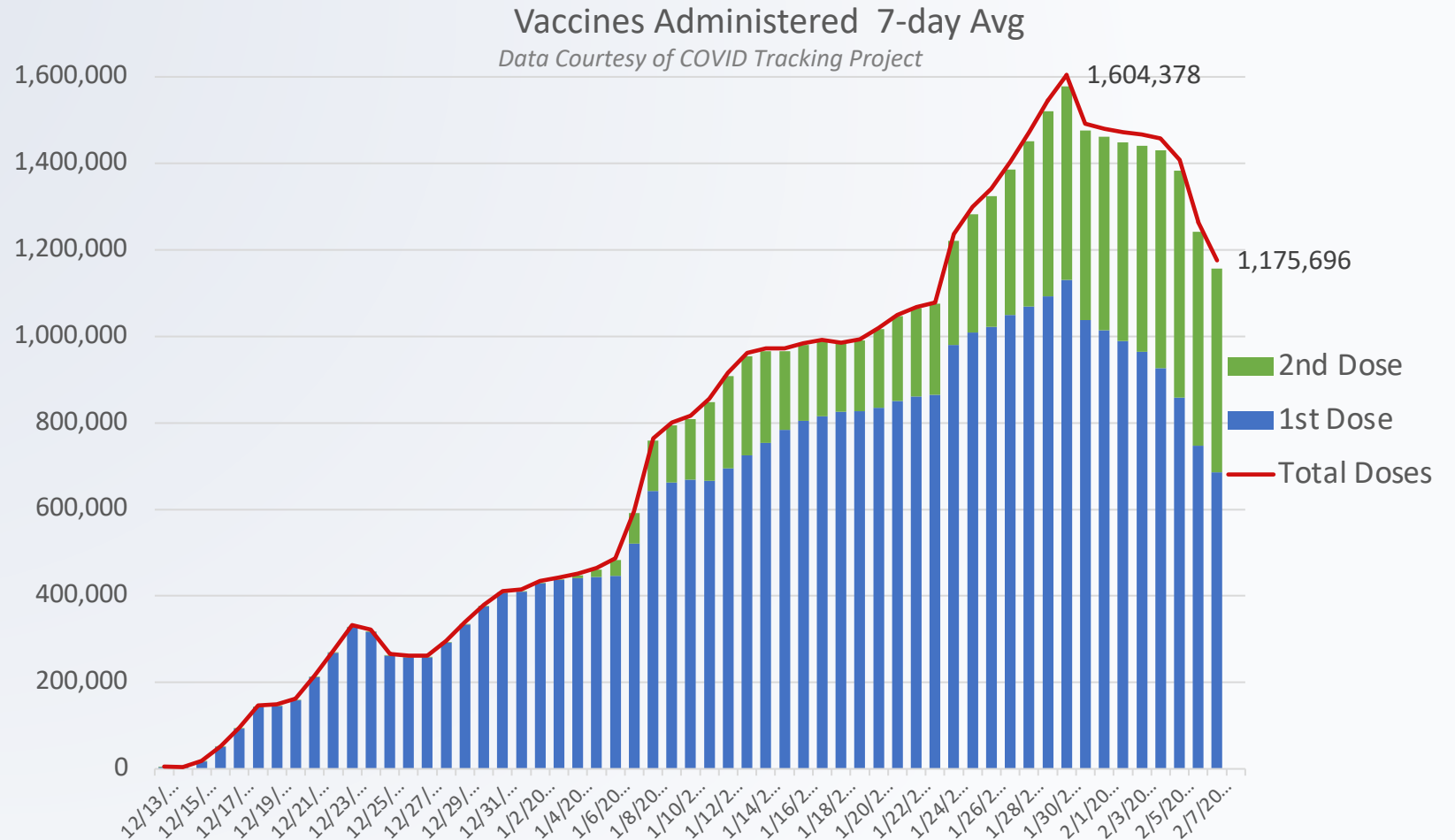
- The average # of patients hospitalized fell by 15% last week to the lowest average # since late November.





US Vaccines Administered

- Roughly 9.7% of the US population has received at least one dose of the vaccine and 2.9% have received both doses.



Feeder Markets

Western Region & Northeast, South, Midwest Regions

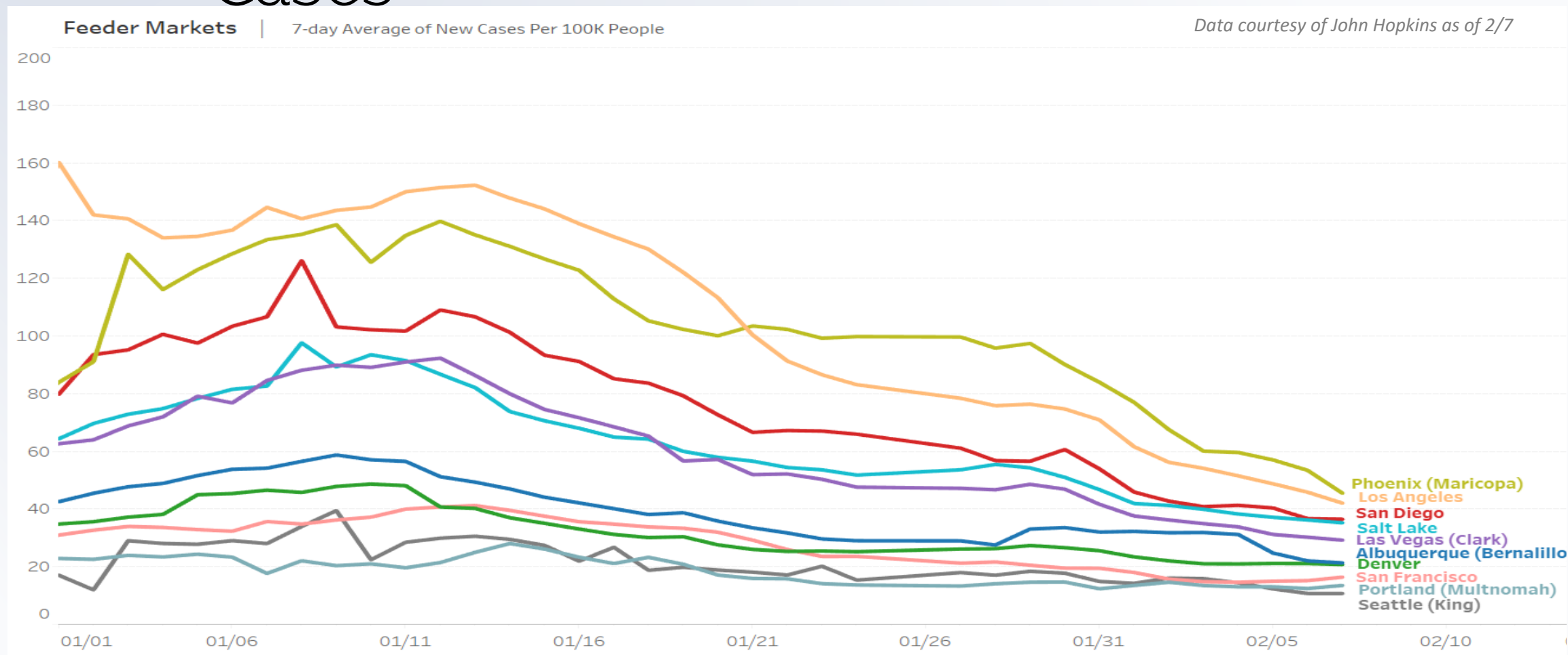


INSIGHTS COLLECTIVE

Pandemic Economics Think Tank

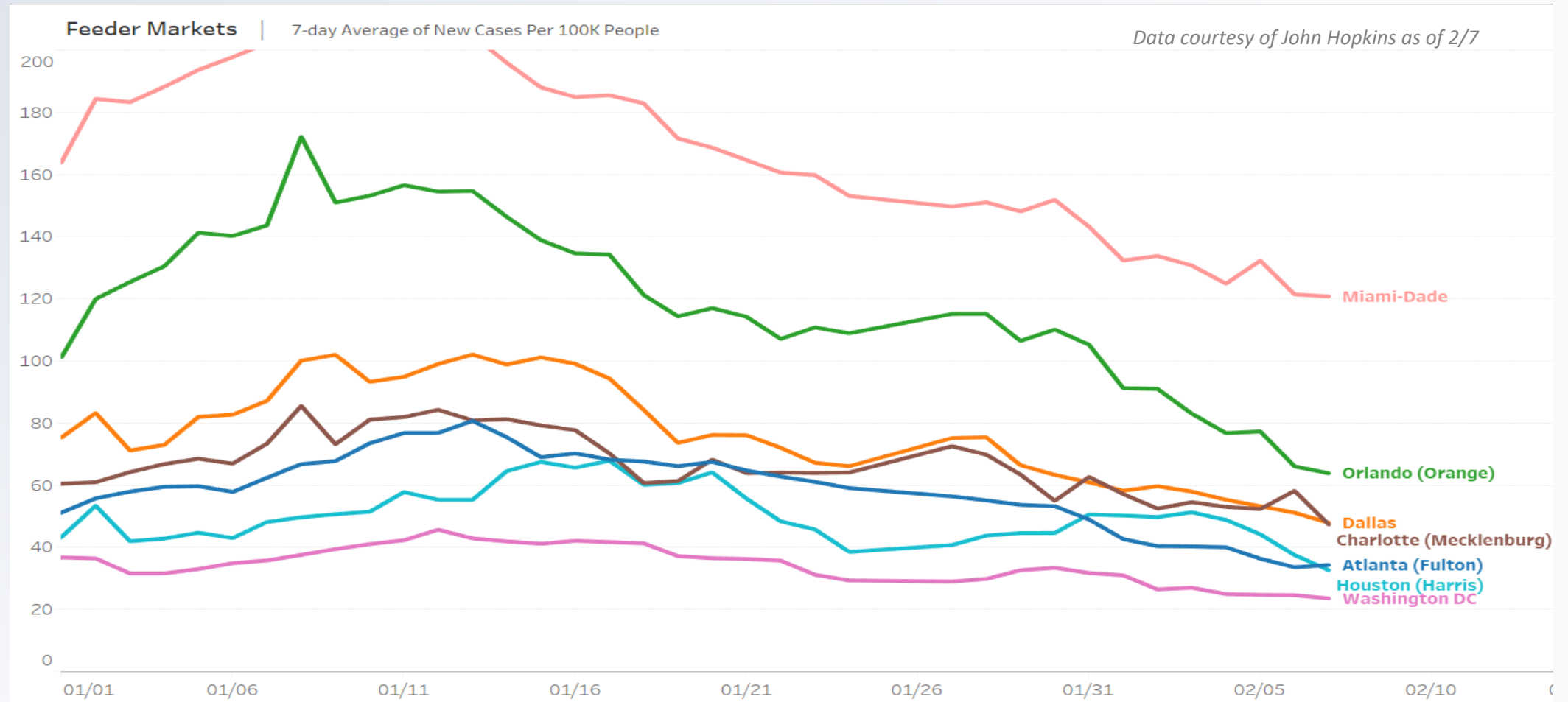


Feeder Markets: Western Region – New Cases



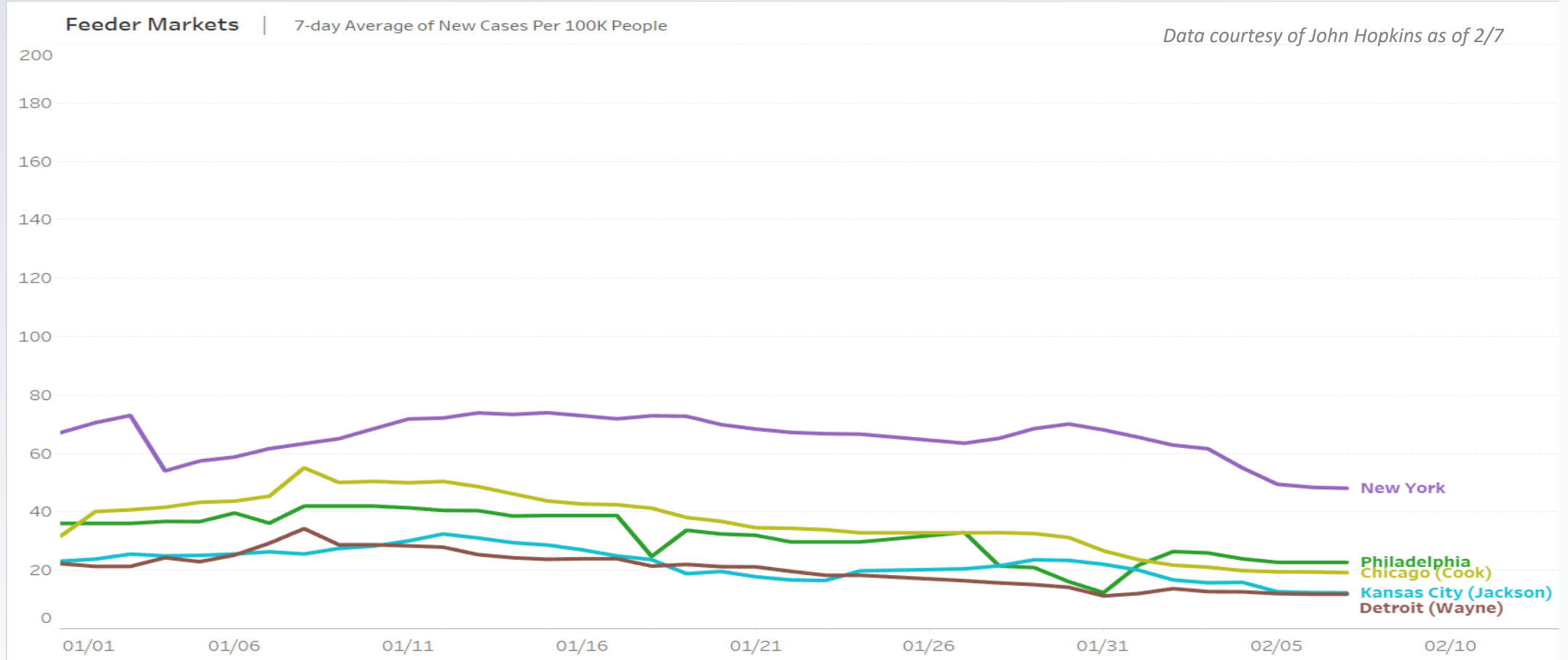


Feeder Markets: Southeast – New Cases





Feeder Markets: Northeast, Midwest Regions – New Cases



Destinations

Western Mountain & Southeast



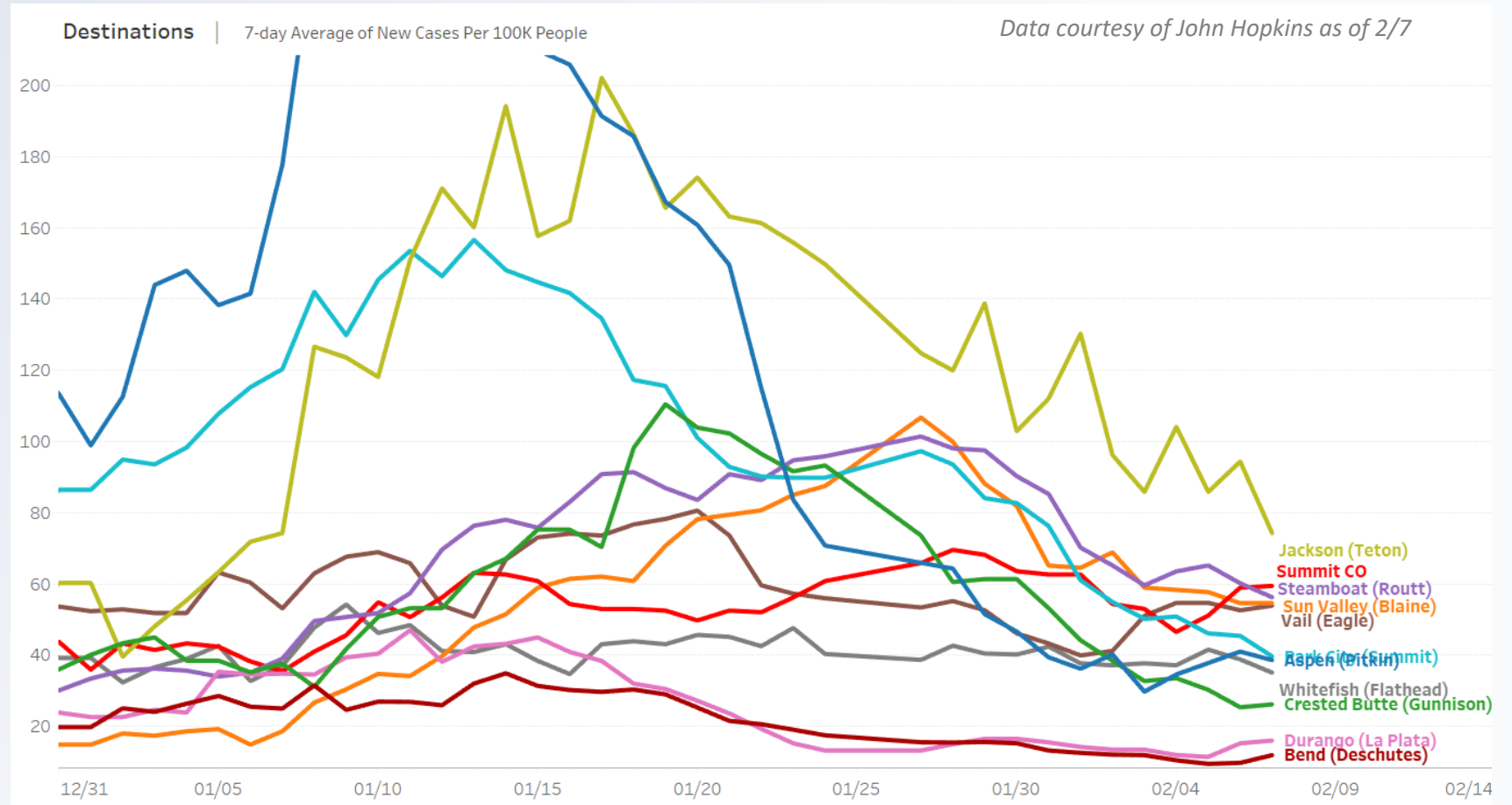
INSIGHTS COLLECTIVE

Pandemic Economics Think Tank



Western Mountain Destinations – New Cases

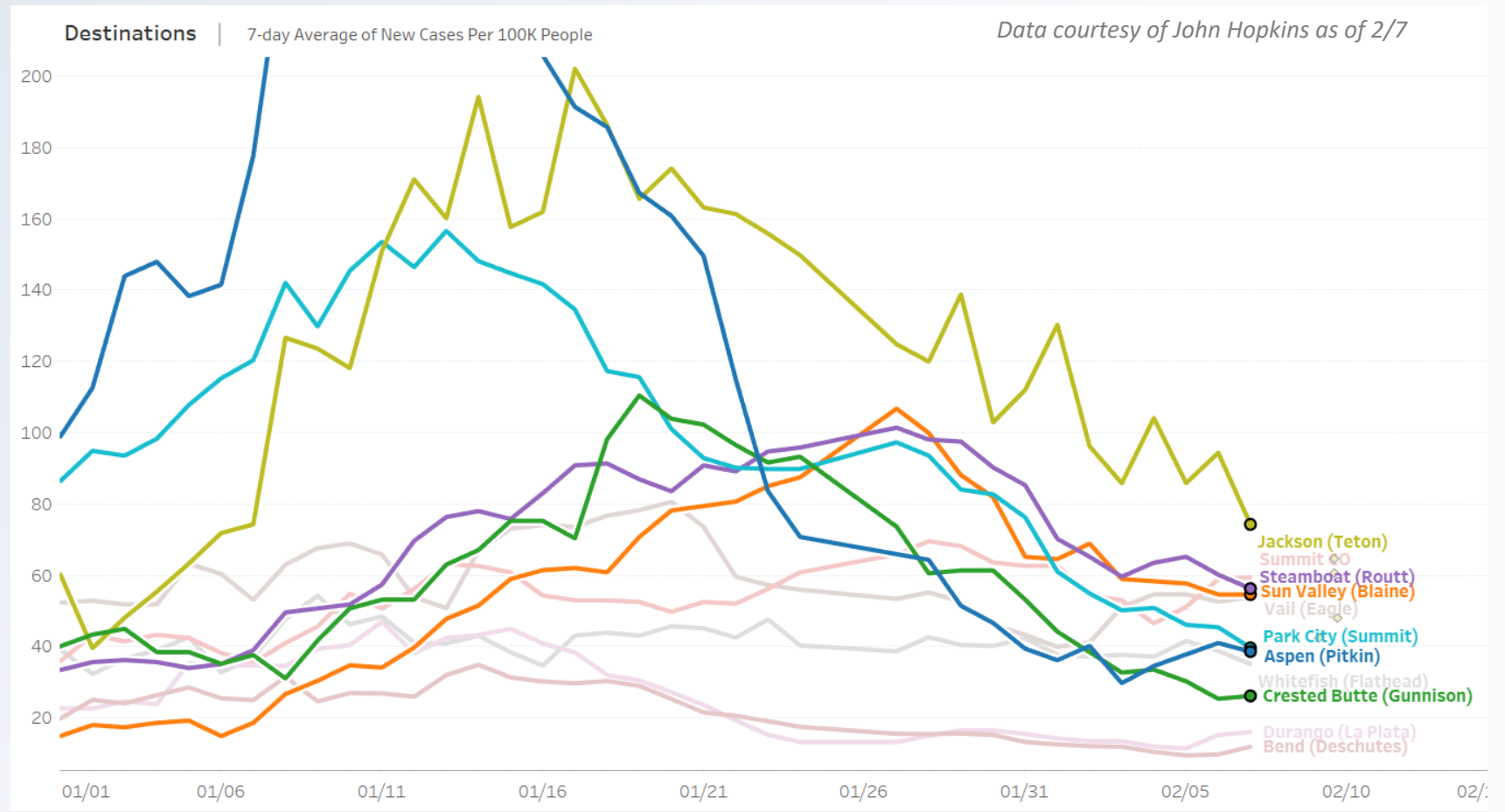
- The 5 highlighted destinations have maintained relatively flat numbers since the beginning of the year.





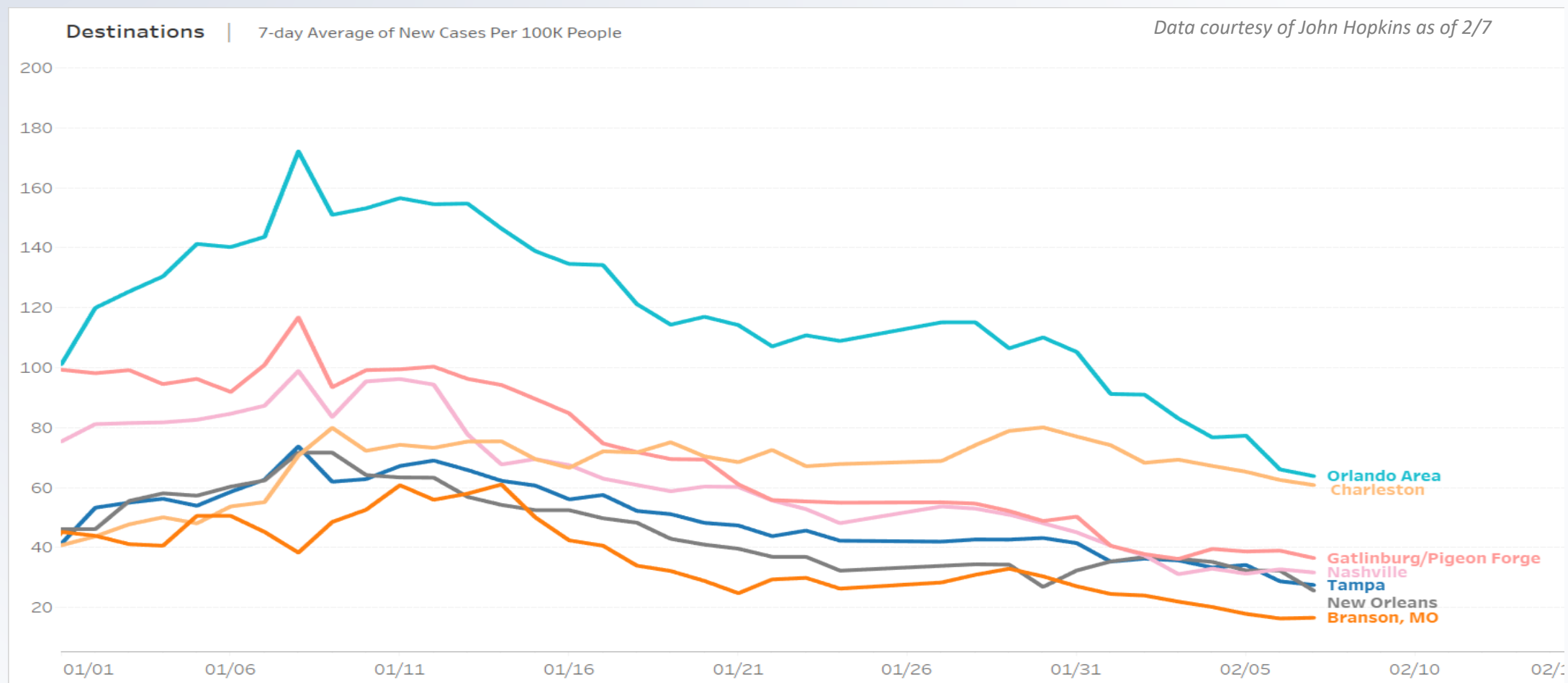
Western Mountain Destinations – New Cases

- Following big spikes in mid-January, these highlighted destinations have been able to maintain steady declines.





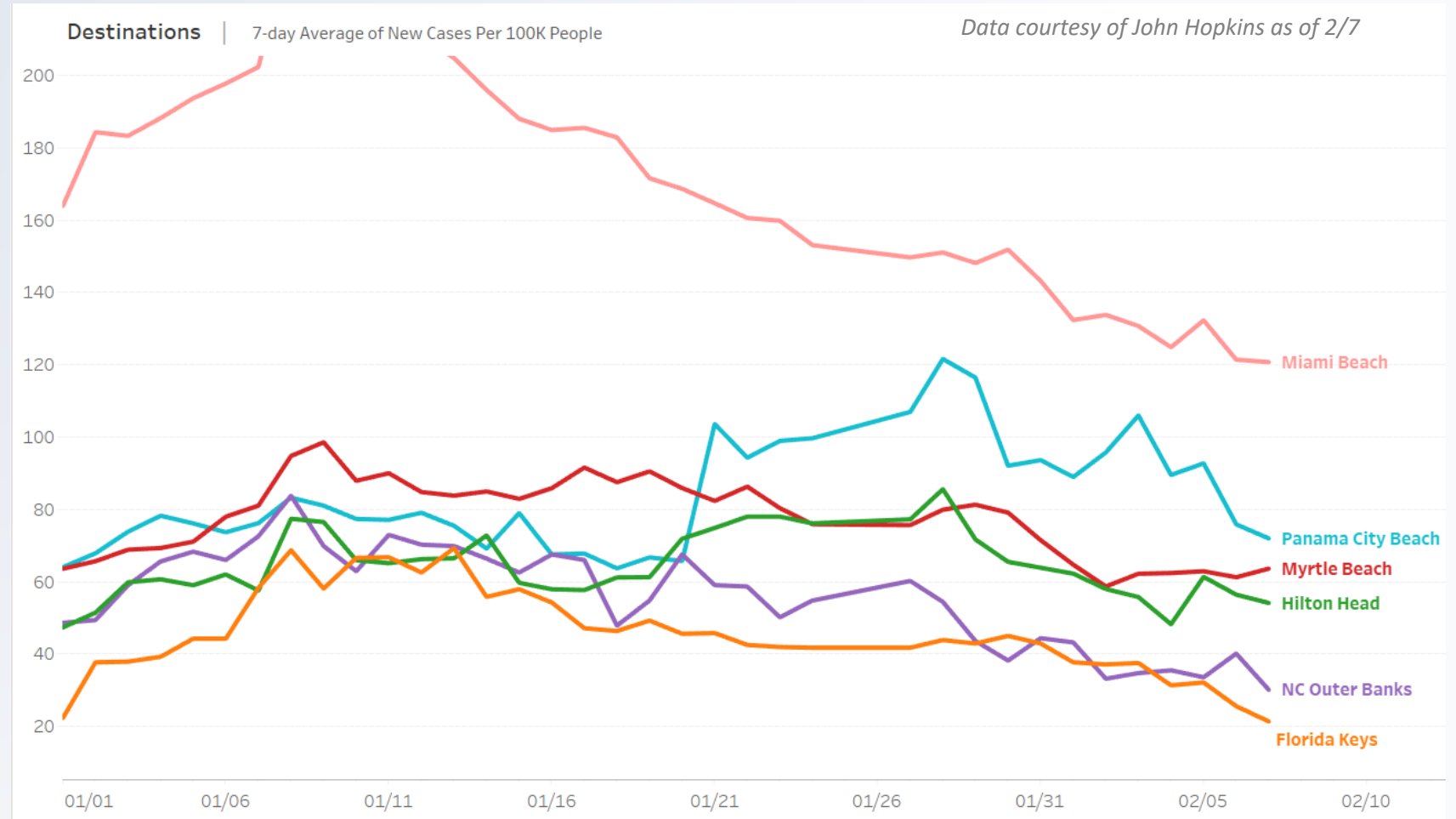
Southeast Destinations – New Cases





Southeast Beach Destinations – New Cases

- Bay County (Panama City Beach) has seen their positivity rate decline from over 20% to around 14% in the last few weeks.
- Overall case rates are declining or remaining relatively flat in these destinations.



By State



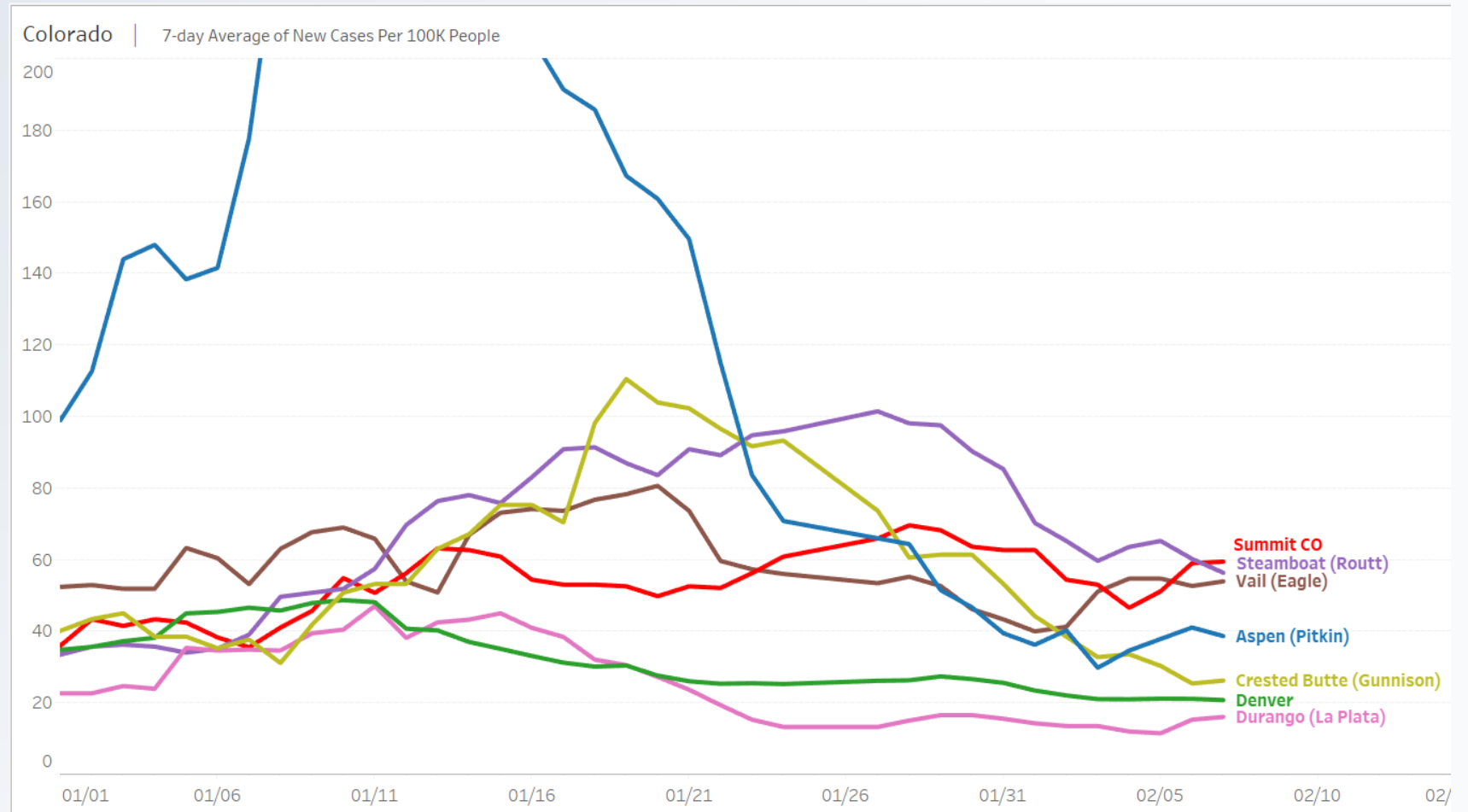
INSIGHTS COLLECTIVE

Pandemic Economics Think Tank



Colorado

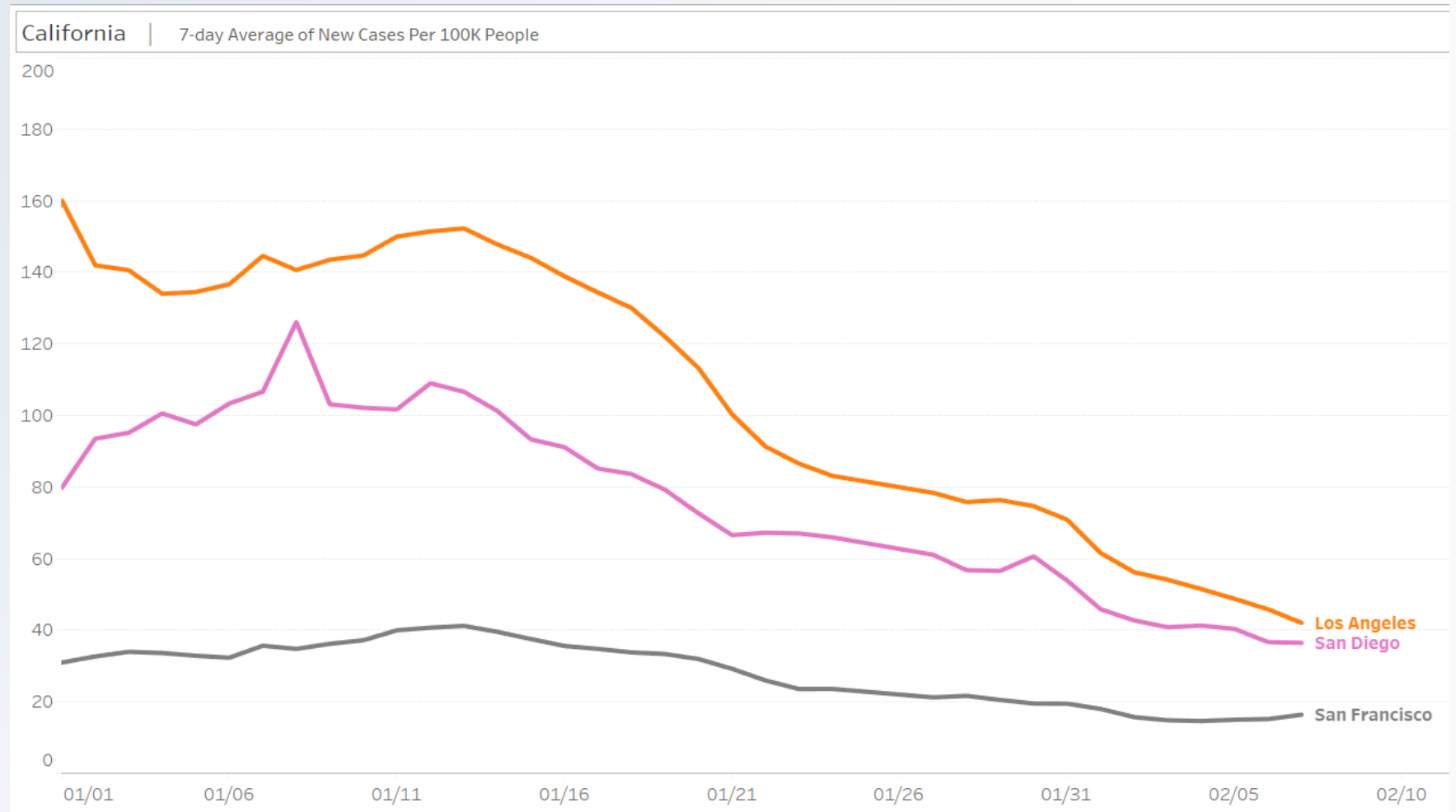
- Colorado has again made changes to its COVID-19 dial. The updates will allow for movement between restriction levels to happen more quickly and will rely on 7-day average numbers rather than 14.





California

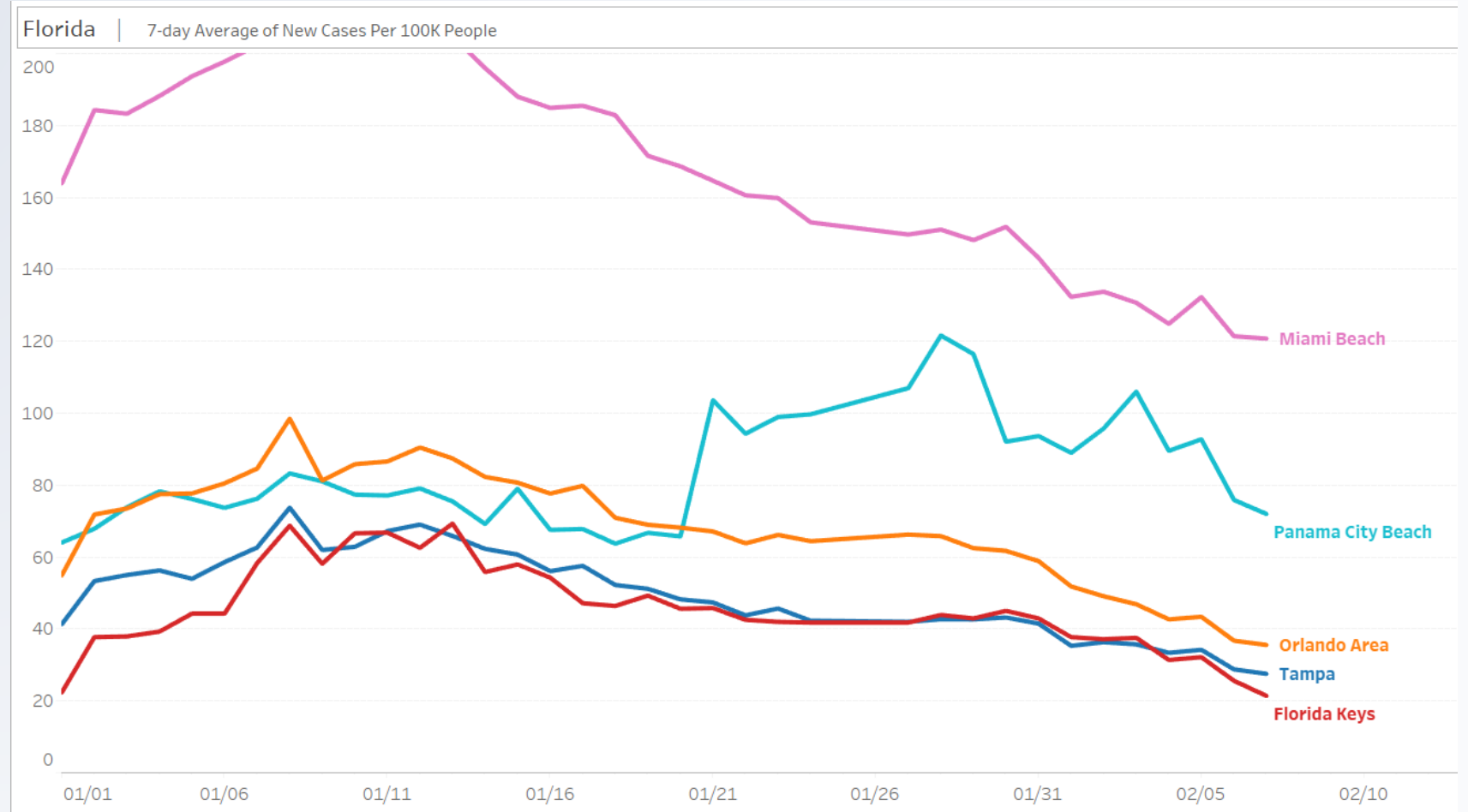
- New cases in California have fallen 55% in the past 2 weeks and more than 70% from their peak in mid-January.





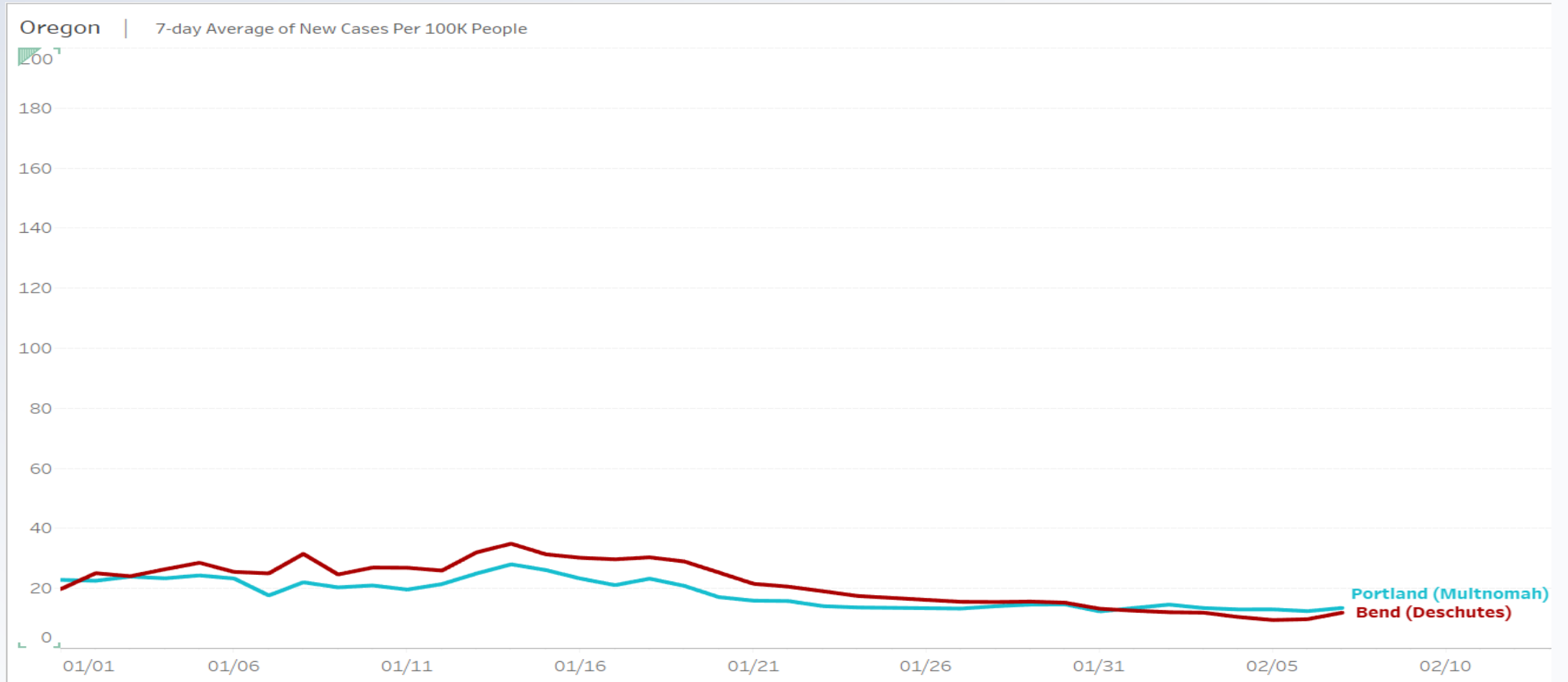
Florida

- Florida has more than 200 confirmed cases of the UK variant of COVID, with the highest concentration of cases in Broward and Miami-Dade counties.





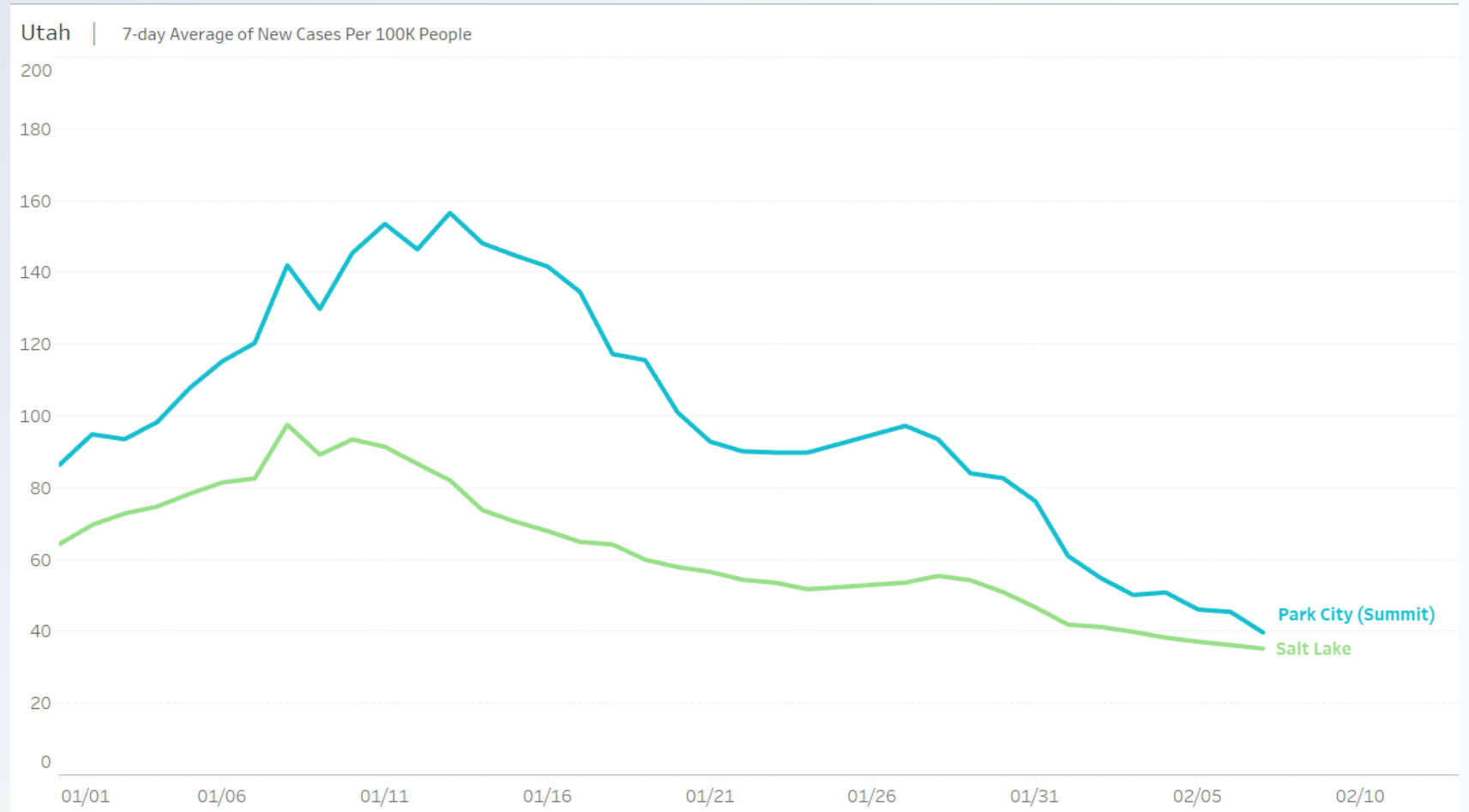
Oregon





Utah

- Utah reported its lowest single-day number of cases (514) since mid-September on Sunday, Feb. 7.



The COVID-19 Virus Tracking is a weekly distribution of Insights Collective, an industry Think Tank focused on leading destinations through the New Realities of destination/resort management, marketing and positioning.

The COVID-19 Virus Tracking, combined with other resources from Insights Collective, allows destination and resort executives to have top-line information on demand and supply developments, along with Insights Collective knowledge on where to focus resources next.

For more information on COVID-19 developments, or industry implications: Susan Rubin-Stewart 970-333-0075 SRS Consulting Services or Jane Babilon 303-921-5173.